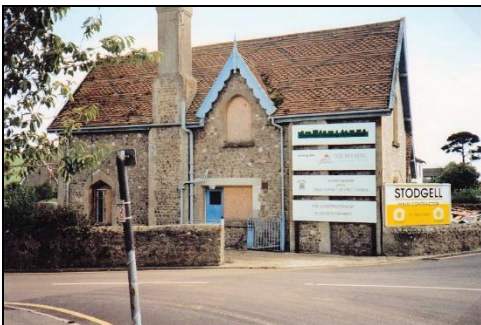
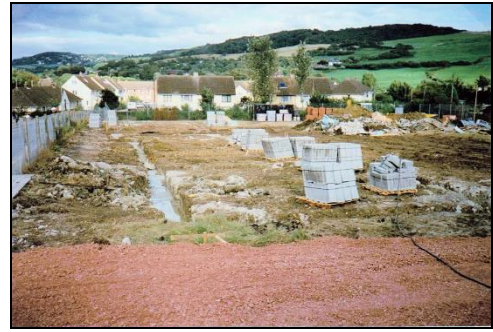


The Transformation of the Old Building.

Since the school moved to its new premises the old building has been converted into four habitable units and two blocks of terraced affordable homes built on the rest of the site. The terraced houses are in two blocks, one of five dwellings and one of eight. The School house is now one unit, the hall which was 950 square feet plus the kitchen is two units and the classroom off the hall, 400 square feet is the fourth unit. The pictures on the following pages show how that transformation took place.





The picture on the left below is the kitchen of one of the units, the door is the one at the North East corner of the hall. The bottom right hand picture is taken looking inside the French windows of the school house, and the remaining four pictures are of the rooms created in the classroom that was off the hall, a kitchen, a bathroom, a bedroom and a sitting room measuring 400 square metres altogether.



These pictures were taken in 2012 and show the old school and the properties that were put onto the area where the mobile classrooms and the playground had been; 17 dwellings in total.



This is the site of the present school. Pictures taken during a Sports Day show the layout of the whole field. For Sports Day the County ground staff marked out lanes for the events. The width of the field was approximately 70 metres. The senior flat races and relays were from that distance. Other races were shorter, but all finished at the same place. There was quite a dip, just visible on the bottom right picture, which didn't

prove much of a problem for the children, but caused an occasional pile up in the parents' races. The children were positioned, in teams, on the West side of the field and the parents and friends watched from the East side. The picture doesn't show all the spectators because they tended to congregate around the finish line.



Since the above photos were taken much has changed on the playing fields!





The same thing has happened at the new school as happened at the old building. Due to lack of space an extra classroom has been added in the North West corner.

There have been several other alterations and improvements since the building was first opened in 1993. Mezzanine floors have been added to the Library area and the original Deputy Head's office. The kitchen has been enlarged to cater for school lunches and a new staffroom has been added next to the girls' toilets.

The original staffroom has also been enlarged to provide a teaching area. Alterations have also been made to the Secretary's office to make room for additional staff and the increased administration now necessary.

Outside attractive sitting areas have been added to the playground without taking up any of the original play area, as can be seen in the picture above.

Also added are four raised beds to encourage the children to take an interest in gardening.



The grounds have changed considerably in the, almost, 20 years since the school opened as is shown below. Photos taken in similar positions in:-

1993



2012

